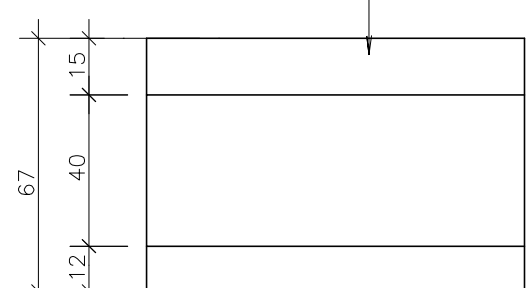
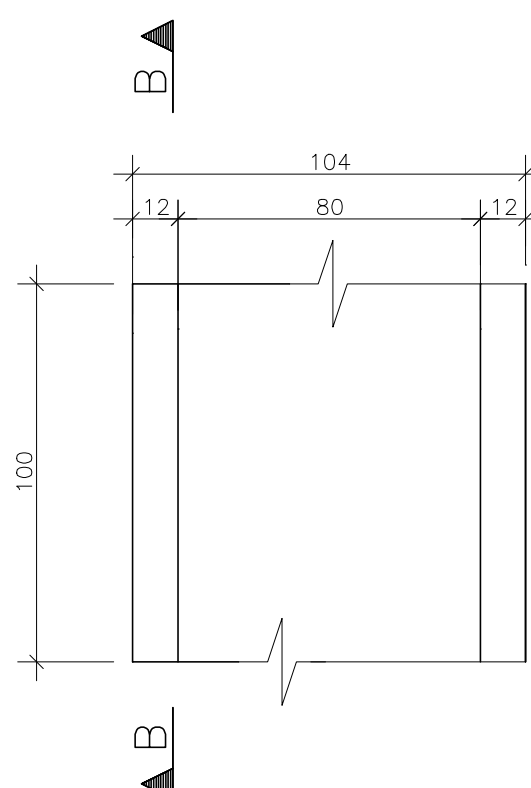


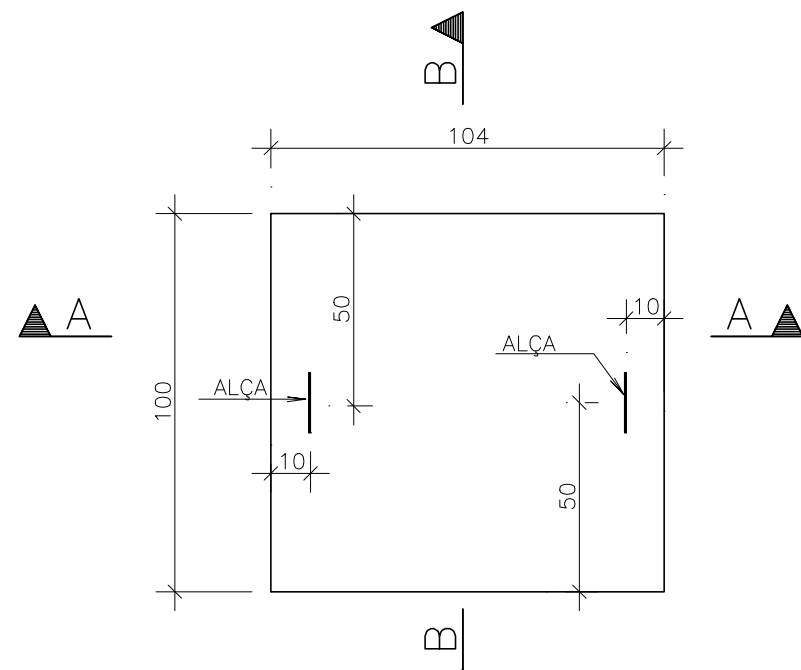
CORTE A-A  
ESCALA: 1/20



CORTE B-B  
ESCALA: 1/20



PLANTA BAIXA  
ESCALA: 1/20



TAMPA  
ESCALA: 1/20

**RESUMO DE QUANTITATIVO			
*ÁREA DE FORMAS			3,492m <sup>2</sup>
*VOLUME DE CONCRETO			0,3768m <sup>3</sup>
**CONFERIR QUANTITATIVOS NA OBRA			
**QUANTITATIVO PARA 1,00M			

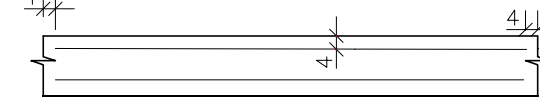
AÇO	POS	BIT (mm)	QUANT	COMPRIMENTO UNIT (cm)	TOTAL (cm)
50A	1	6.3	14	100	1400
50A	2	6.3	7	214	1498
50A	3	6.3	10	110	1100
60B	4	9	6	106	636
50A	5	6.3	12	100	1200
60B	6	9	15	100	1500
50A	7	10	2	75	150

RESUMO AÇO CA 50-60			
AÇO	BIT (mm)	COMPR (m)	PESO (kg)
60B	9	23	4
50A	6.3	56	13
50A	10	2	1
Peso Total	60B =		4 kg
Peso Total	50A =		14 kg

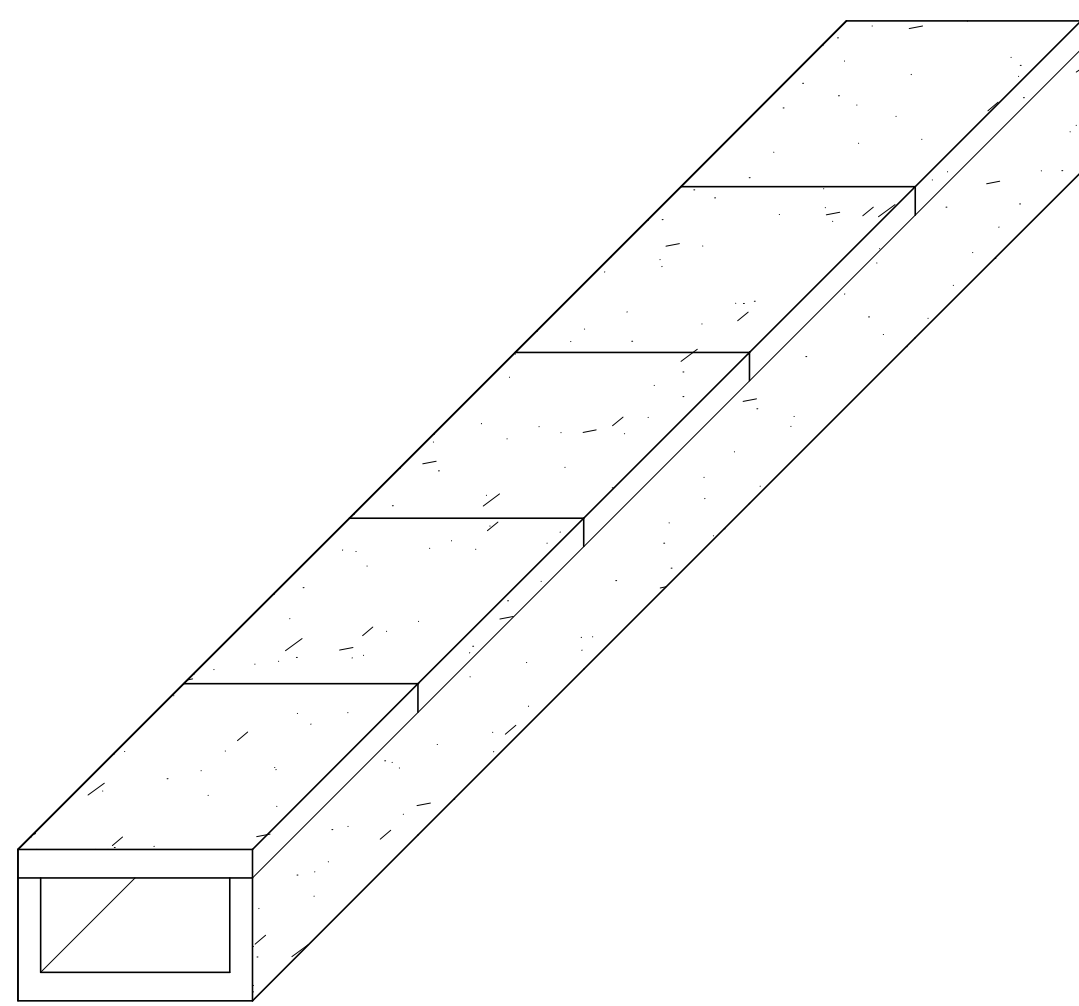
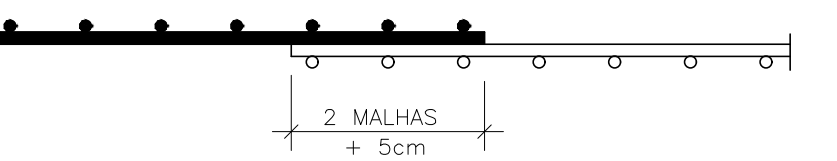
TABELA DE TRANSPASSE	
Ø 6.3mm	40cm
Ø 8.0mm	50cm
Ø 10mm	60cm
Ø 12.5mm	70cm
Ø 16mm	90cm
Ø 20mm	110cm

NOTA: PARA OS COBRIMENTOS ADOTADOS, DEVE-SE ADOTAR UM CONTROLE DE QUALIDADE E RÍGIDO NOS LIMITES DE TOLERÂNCIA DA VARIABILIDADE DAS MEDIDAS DURANTE A EXECUÇÃO, VER CORTE:

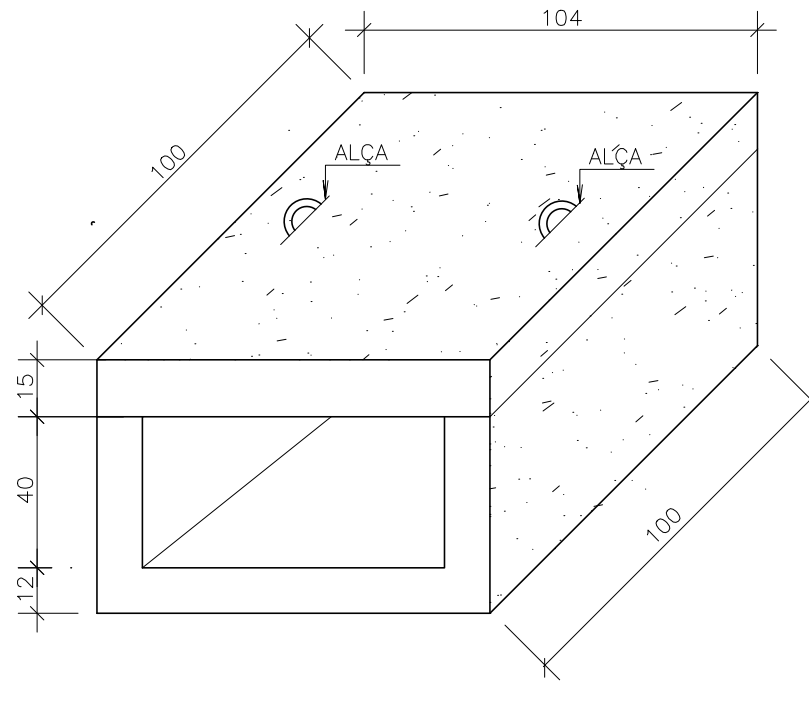
DESENHO ESQUEMÁTICO DE COBRIMENTO



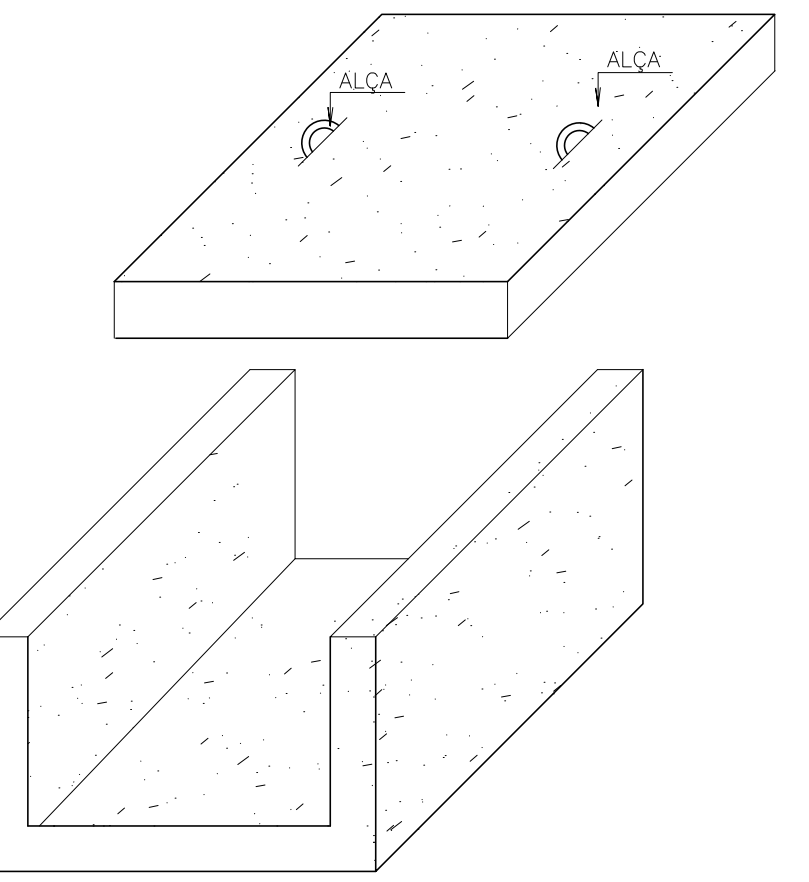
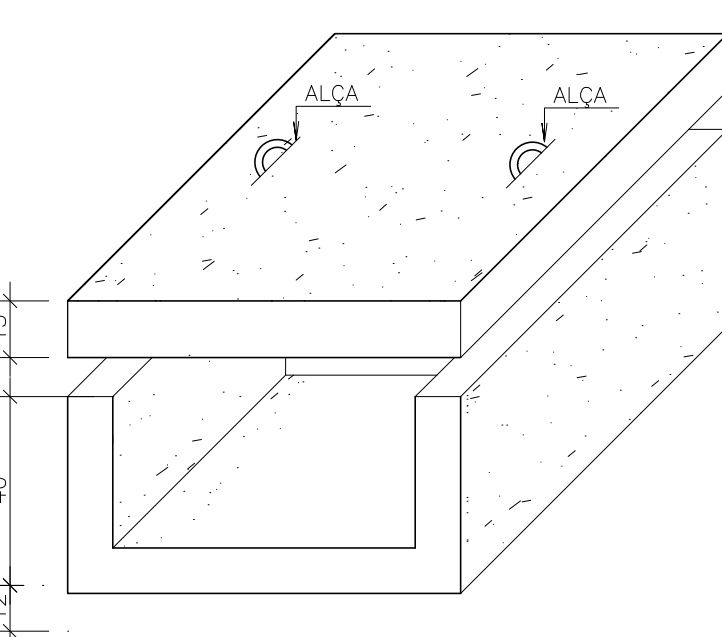
EMENDAS POR TRANSPASSE PARA AS TELAS ARMADURA POSITIVA/NEGATIVA



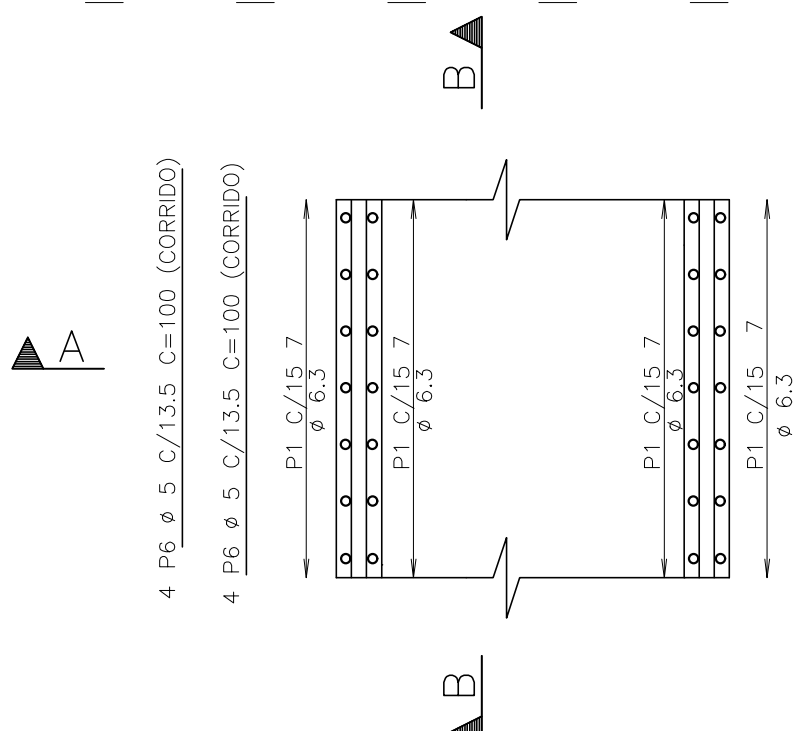
PERSPECTIVA GERAL DO DESENHO  
SEM ESCALA



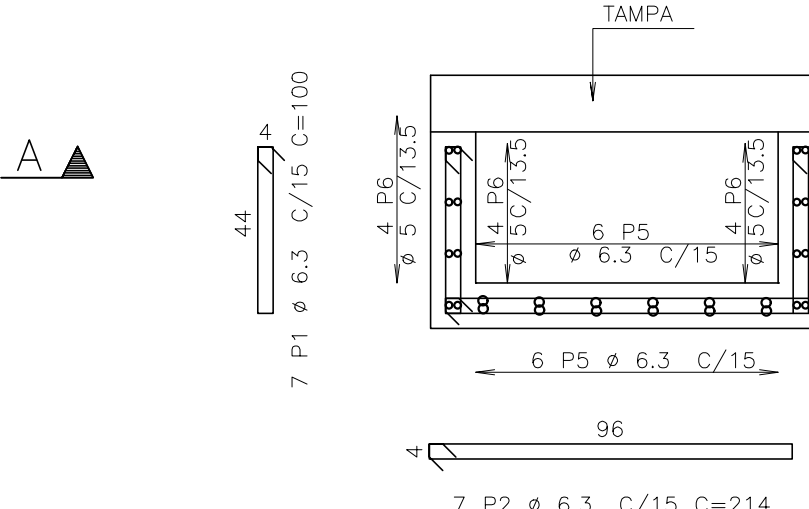
CORTE A-A PERSPECTIVA  
ESCALA: 1/20



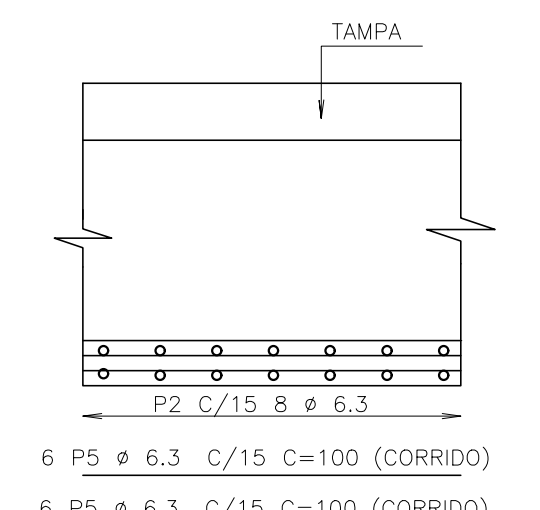
#### OPÇÃO 1 - ARMADURA CONVENCIONAL



PLANTA BAIXA  
ESCALA: 1/20

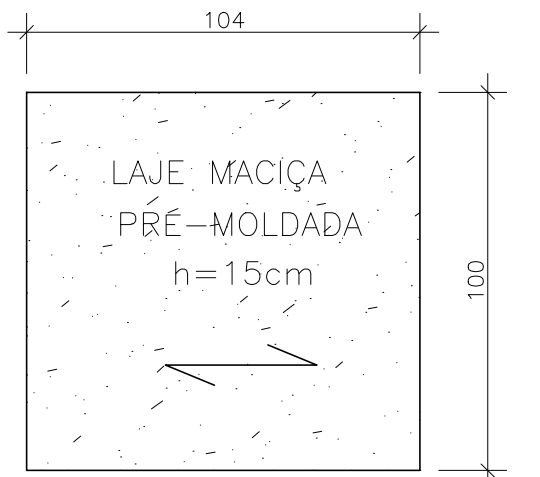


CORTE A-A  
ESCALA: 1/20

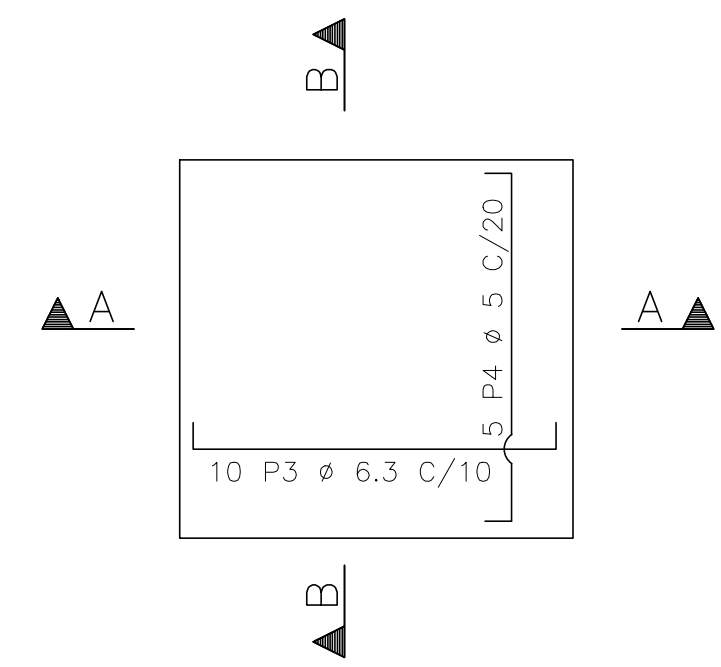


CORTE B-B  
ESCALA: 1/20

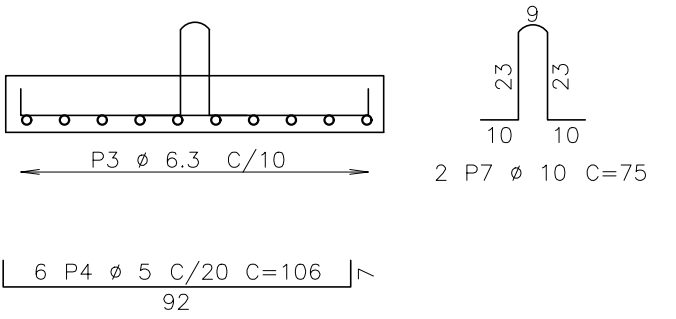
#### OPÇÃO 1 - ARMADURA CONVENCIONAL TAMPA



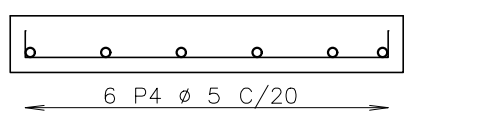
FORMA DA TAMPA  
ESCALA: 1/20



ARMAÇÃO DA TAMPA  
ESCALA: 1/20

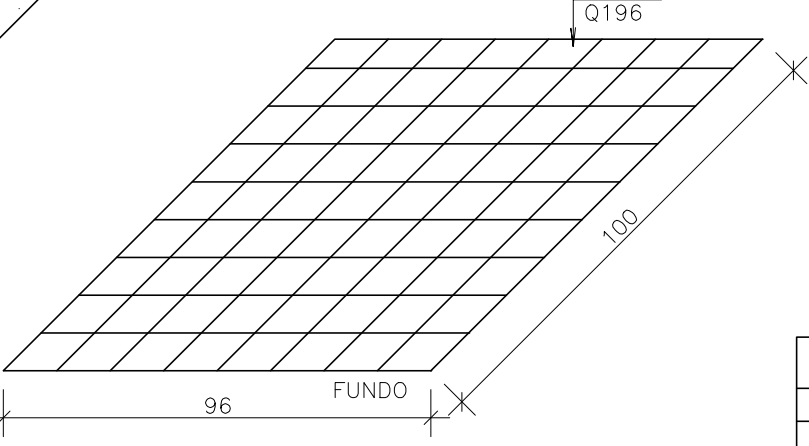
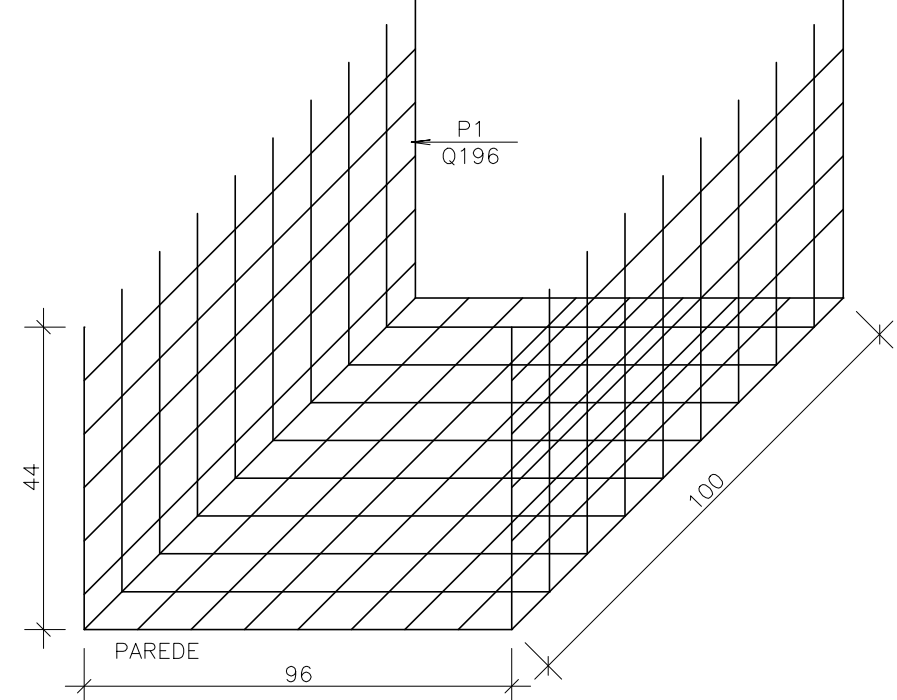
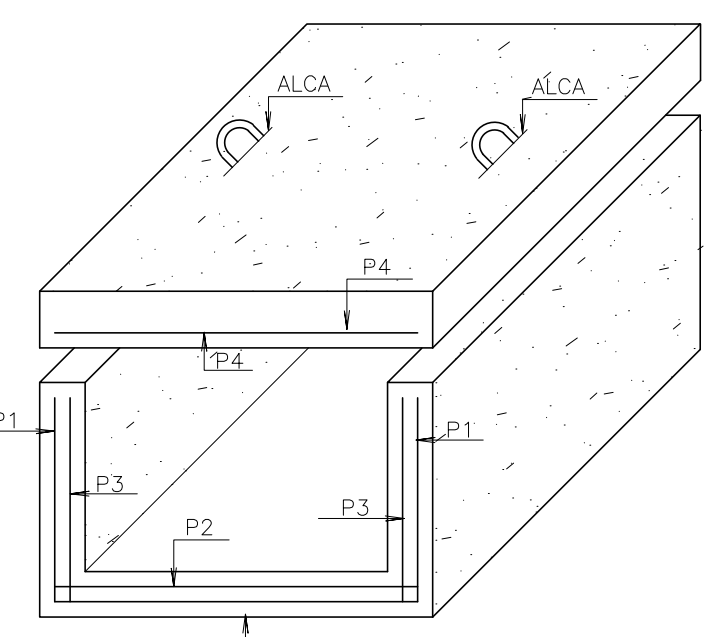
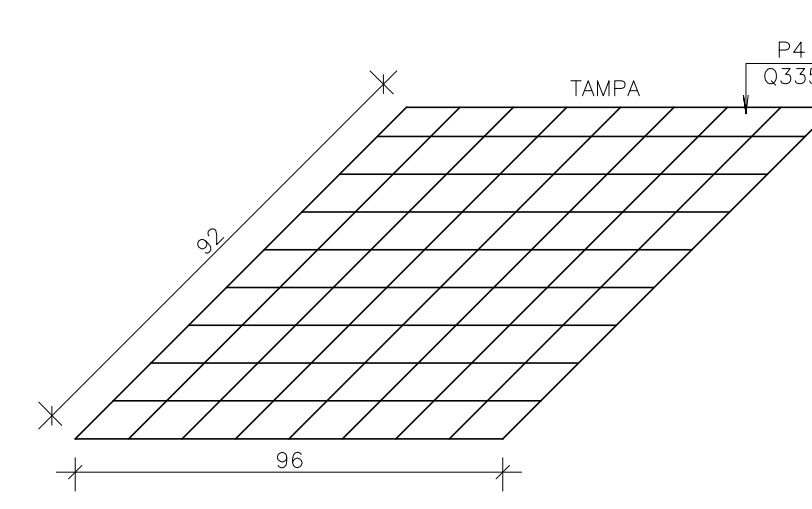
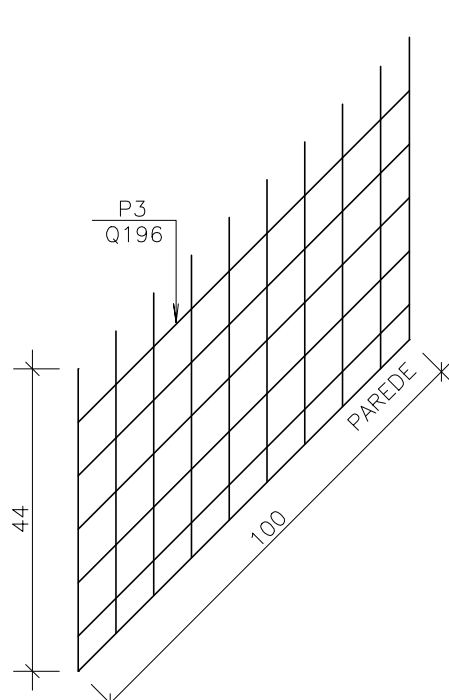


CORTE B-B  
ESCALA: 1/20



CORTE A-A  
ESCALA: 1/20

#### OPÇÃO 2 - ARMAÇÃO EM TELAS SOLDADAS



QUADRO RESUMO PARA TELAS			
TIPO	Ø (mm)	UNIT (kg/m <sup>2</sup> )	TOTAL (kg)
P1-Q196 (x1)	Ø 5.0	3,11	5,72
P2-Q196 (x1)	Ø 5.0	3,11	2,98
P3-Q196 (x2)	Ø 5.0	3,11	2,74
P4-Q335 (x1)	Ø 8.0	5,37	4,74
TOTAL (kg)			17,43

\*\*CONFERIR QUANTITATIVOS NA OBRA  
\*\*QUANTITATIVO PARA 1m

ARMAÇÃO EM TELA - PERSPECTIVA  
ESCALA: 1/20

CONCRETO fck ≥ 25 Mpa  
MEDIDAS EM CENTÍMETROS E NÍVEIS EM METROS  
VERIFICAR MEDIDAS E NÍVEIS NA OBRA.

R00	JUL/2022	R.G.	EMISSÃO INICIAL
REV	DATA	RESP	DESCRIÇÃO
PREFEITURA DE MACEIÓ			
TÍTULO: DRENAGEM SUPERFICIAL DA ENCOSTA CHÁ BEBEDOURO 2 - GALERIA			
PROJETO: PROJETO DE DRENAGEM SUPERFICIAL			
LOCAL: CHÁ BEBEDOURO - MACEIÓ - AL			
PROJETO			
DATA:	PROJETO/REVISÃO/REVISÃO	PROJETO/REVISÃO	PROJETO/REVISÃO
JUL/2022	Rafael Gullou	02/01/2022AL	Drenagem
ESCALA:	W DO DOCUMENTO	236.02-CHB-DRE-B-04-R00	REVISÃO
Indicada			R00
44			